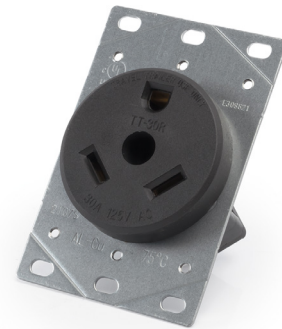




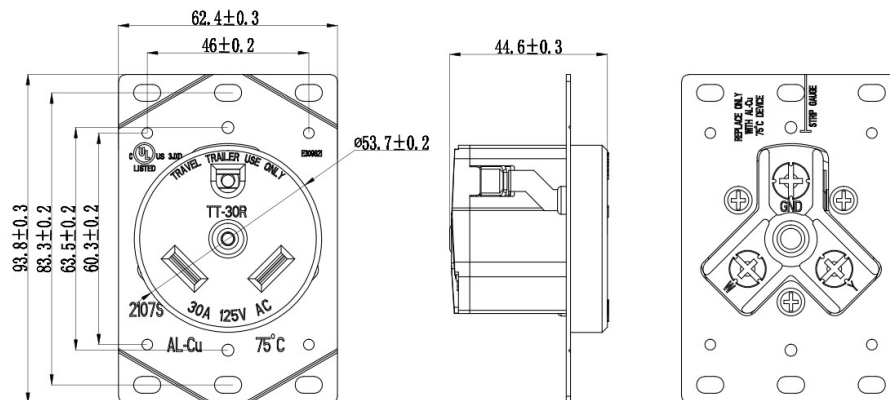
CONTRACTOR	
PROJECT	DATE
PREPARED BY	MODEL :

SERIES SPECIFICATIONS

30 Amp, 125V, NEMA TT-30R, 2P, 3W, Flush Mtg Receptacle, Straight Blade, Industrial Grade, Grounding, AL-CU, Side Wired, Steel Strap, - Black



LINE DRAWING



CONSTRUCTION

Finish

Black

Cover Material

PA6+GF20

Base Material

PA6+GF20

Line Contacts

Bass Double-Wipe

Strap Material

Galvanized Steel

NEMA

TT-30R

ELECTRICAL SPECIFICATIONS

Voltage

125VAC

Amperage

30A

Grounding

Yes

Wire

3

Poles

2

AC Horsepower Ratings

2HP

Dielectric Voltage

Withstands 2000V per UL498

Current Limiting

Full Rated Current

Temperature Rise

Max 30°C after 50 cycles OL at 150 percent rated current

APPLICATION AND PERFORMANCE SPECIFICATION INFORMATION IS SUBJECT TO CHANGE WITHOUT NOTIFICATION



404 NW ENTERPRISE DR. PORT ST. LUCIE, FL 34986 | 772.408.5213 | WWW.RPP-USA.COM



CONTRACTOR	
PROJECT	DATE
PREPARED BY	MODEL :

ENVIRONMENTAL SPECIFICATIONS

Flammability

Rated V-2 per UL94

Operating Temperature

-30°C to 60°C

MECHANICAL SPECIFICATIONS

Terminal Accept

10 to 4 AWG

CERTIFICATIONS/WARRANTY

Listing

c-UL-us Listed

Warranty

Guaranteed for one year from the purchase date of the product, against mechanical defects in manufacturing.

ORDERING INFORMATION

Part Number: TT30

IMS Code : 0425-4462

APPLICATION AND PERFORMANCE SPECIFICATION INFORMATION IS SUBJECT TO CHANGE WITHOUT NOTIFICATION



404 NW ENTERPRISE DR. PORT ST. LUCIE, FL 34986 | 772.408.5213 | WWW.RPP-USA.COM