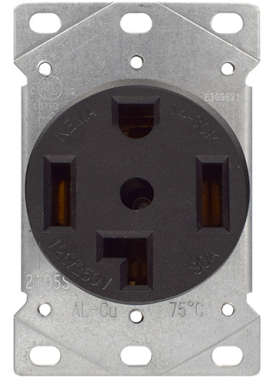




MODEL :	TYPE	
PROJECT :		
PREPARED BY :	DATE :	

SERIES SPECIFICATIONS

30A 125/250V, 3 Pole/4-Wire Flush Mount Dryer Receptacle
All mounting hardware included
Flush mount receptacles fit in one or two gang enclosures
Available in white or black
Receptacle for use with copper wire



CONSTRUCTION

Color
Black

Grade
Residential

Device Type
Receptacle

Strap Material
Steel/Zinc Plated

Environmental Rating
Flammability UL94, V2 Rating

Operation Temperature
N/A

NEMA Configuration
1430-R

ELECTRICAL SPECIFICATIONS

Amperage
30 Ampere

Voltage
125/250 V AC

Poles
3

Termination 1
#4 to #10 AWG Cu conductors

Termination 2

Grounding Capable
Grounding

Wires
4

APPLICATION AND PERFORMANCE SPECIFICATION INFORMATION IS SUBJECT TO CHANGE WITHOUT NOTIFICATION



404 NW ENTERPRISE DR. PORT ST. LUCIE, FL 34986 | 772.408.5213 | WWW.RPP-USA.COM



MODEL :		TYPE
PROJECT :		
PREPARED BY :	DATE :	

CERTIFICATIONS/WARRANTY

Listing
UL listed Listed

Warranty
Guaranteed for one year from the purchase date of the product, against mechanical defects in manufacturing.

ORDERING INFORMATION

Part Number: FMD1430R-BK

Box Qty : 10

Weight (Lbs) : 0.363

Carton Qty. : 40

IMS Code : 0273-5232

APPLICATION AND PERFORMANCE SPECIFICATION INFORMATION IS SUBJECT TO CHANGE WITHOUT NOTIFICATION

